

# The Oxenton

## Wintergreen Court

One bedroom apartment — private balcony

Available: 1



Part of

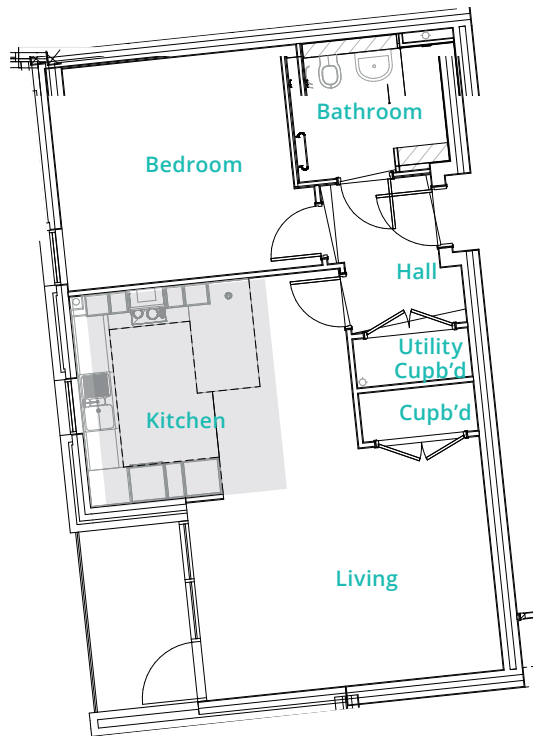


07435 995071

[brioretirement.co.uk](http://brioretirement.co.uk)

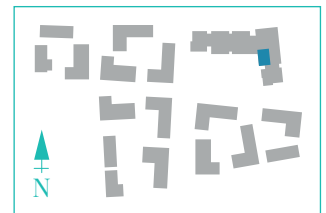
# The Oxenton

**Wintergreen Court**  
First Floor: Apartment 11



Typical Layout

## Block plan



	m	ft
Living	4.90 x 3.85	16'1" x 12'8"
Kitchen	4.40 x 3.40	14'5" x 11'2"
Bedroom	3.85 x 3.65	12'8" x 12'0"
Bathroom	2.50 x 2.25	8'2" x 7'5"
<b>Total</b>	<b>63.0m<sup>2</sup></b>	<b>678ft<sup>2</sup></b>

**Please note:** Although every care has been taken to ensure the accuracy of the information provided within this sale sheet, the contents do not form part of, or constitute any representation, warranty or contractual agreement. These particulars have been prepared for the convenience of interested purchasers, and the information provided is intended as a preliminary guide only. The images used are provided for illustrative purposes only and may not reflect the actual size, layout or external finishes of the completed units.