

# The Wells

**2 & 3 Pennycress Court, 1 Bluebell Court &, 4 & 6 Juniper Court**  
Two bedroom apartment — private balcony

Available: 13

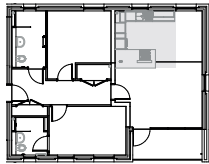


Part of

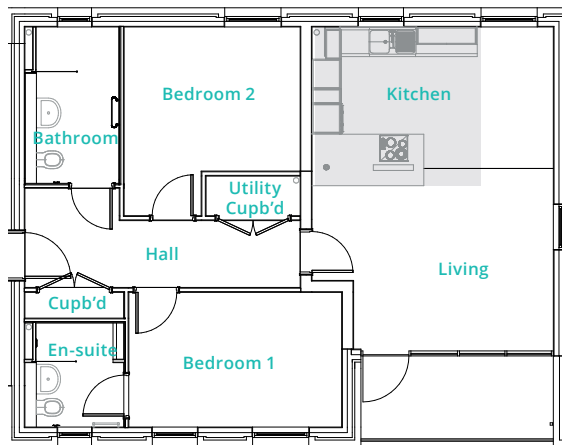


01242 809 032  
[brioretirement.co.uk](http://brioretirement.co.uk)

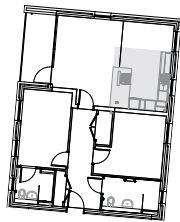
# The Wells



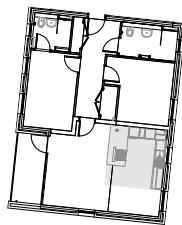
**2 Pennycress Court**  
Ground Floor: Apartment 3  
First Floor: Apartment 4



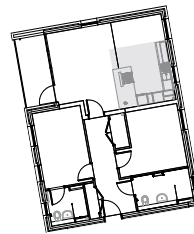
Typical Layout



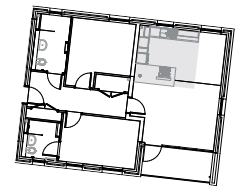
**3 Pennycress Court**  
Ground Floor: Apartment 1 (76.7m<sup>2</sup>)\*  
First Floor: Apartment 4  
Second Floor: Apartment 7



**1 Bluebell Court**  
Ground Floor: Apartment 1 (76.7m<sup>2</sup>)\*  
First Floor: Apartment 4  
Second Floor: Apartment 7



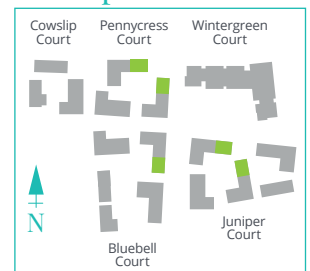
**4 Juniper Court**  
Ground Floor: Apartment 3  
First Floor: Apartment 6



**6 Juniper Court**  
Ground Floor: Apartment 1 (76.7m<sup>2</sup>)\*  
First Floor: Apartment 4  
Second Floor: Apartment 7

	m	ft
Living	5.00 x 3.70	16'5" x 12'2"
Kitchen	5.00 x 2.85	16'5" x 9'4"
Bedroom 1	4.40 x 2.65	14'5" x 8'8"
Bedroom 2	3.50 x 2.90	11'6" x 9'6"
En-suite	2.10 x 1.70	6'10" x 5'7"
Bathroom	2.95 x 1.88	9'8" x 6'2"
<b>Total</b>	<b>79.6m<sup>2</sup></b>	<b>856.8ft<sup>2</sup></b>

## Block plan



**Please note:** Although every care has been taken to ensure the accuracy of the information provided within this sale sheet, the contents do not form part of, or constitute any representation, warranty or contractual agreement. These particulars have been prepared for the convenience of interested purchasers, and the information provided is intended as a preliminary guide only. The images used are provided for illustrative purposes only and may not reflect the actual size, layout or external finishes of the completed units. \*Smaller variant of Wells owing to external plant room.