

The Churchdown

5 Cowslip Court, 1 Pennycress Court, 7 Bluebell Court & 5 Juniper Court
One bedroom apartment — private balcony

Available: 8



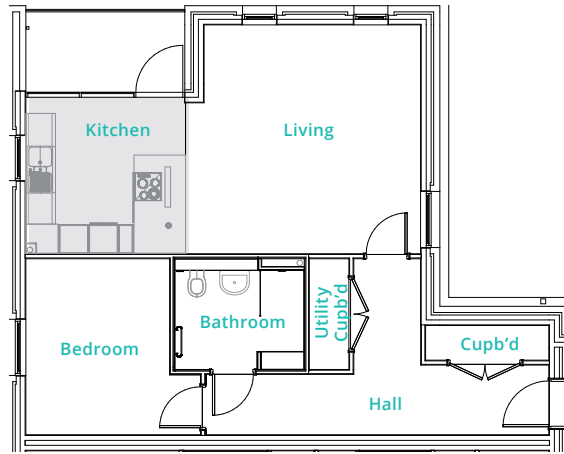
Part of



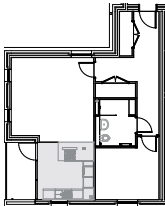
07435 995071

brioretirement.co.uk

The Churchdown

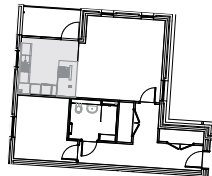


Typical Layout



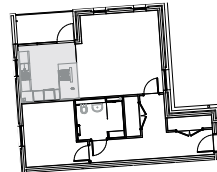
5 Cowslip Court

Ground Floor: Apartment 3
First Floor: Apartment 5



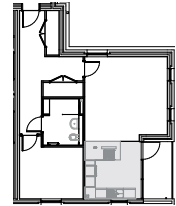
1 Pennycress Court

Ground Floor: Apartment 3
First Floor: Apartment 5



7 Bluebell Court

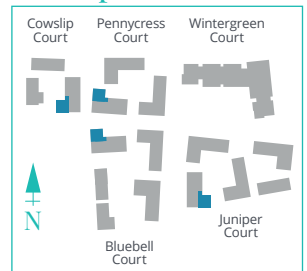
Ground Floor: Apartment 1
First Floor: Apartment 4



5 Juniper Court

Ground Floor: Apartment 3
First Floor: Apartment 4

Block plan



	m	ft
Living	4.70 x 4.60	15'5" x 15'1"
Kitchen	3.20 x 3.10	10'6" x 10'2"
Bedroom	3.50 x 2.85	11'6" x 9'4"
Bathroom	2.58 x 2.00	8'6" x 6'7"
Total	66.1m²	711.5ft²

Please note: Although every care has been taken to ensure the accuracy of the information provided within this sale sheet, the contents do not form part of, or constitute any representation, warranty or contractual agreement. These particulars have been prepared for the convenience of interested purchasers, and the information provided is intended as a preliminary guide only. The images used are provided for illustrative purposes only and may not reflect the actual size, layout or external finishes of the completed units.